

Tejas Tatva: The Chardham Heli Yatra

‘Evoke a deep, soulful journey filled with divine blessings’

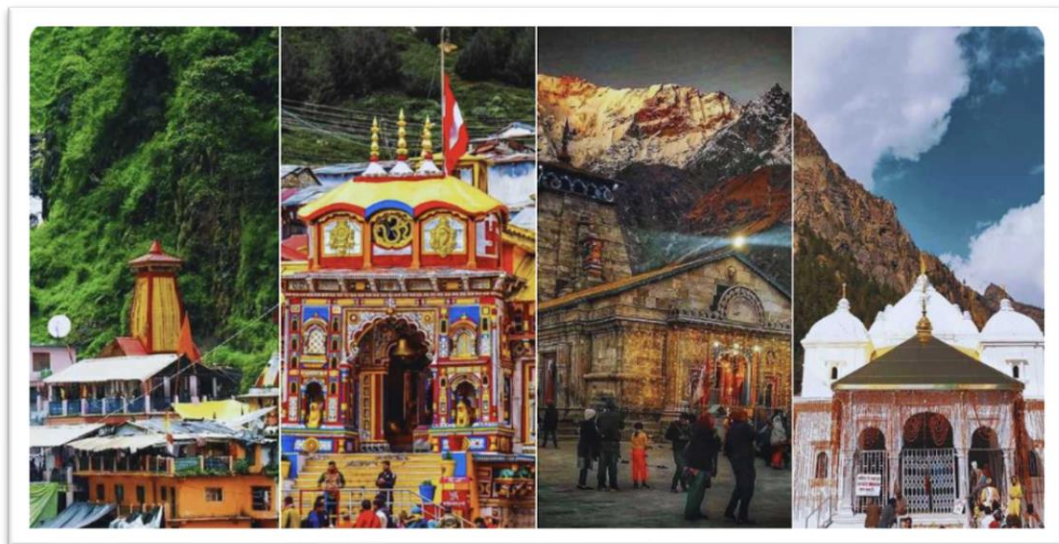
5 Nights /6 Days

Dehradun (1N) – Yamunotri (1N) – Gangotri (1N) – Kedarnath (1N) – Badrinath (1N)

Tour Overview

Embark on a soul-stirring Journey to the sacred Chardham—**Yamunotri, Gangotri, Kedarnath, and Badrinath**—where spirituality meets the stunning beauty of the Himalayas.

With **Soil2Soul Expeditions**, we ensure a transformative and hassle-free pilgrimage, allowing you to focus on devotion and serenity. This sacred pilgrimage transforms into a luxury experience, through **exclusive helicopter transfers, comfortable stays, and warm hospitality**.



Inclusions:

- Helicopter Ride – Dehradun to All Chardham Shrines & back
- Airport and Hotel transfers in Dehradun
- Rooms on Double / Twin Sharing basis
- All ground transfers pertaining to the Darshans
- Pre-Yatra Stay (1 Night) in Dehradun – Relax & rejuvenate before your sacred journey
(Dinner & Breakfast included)
- 4-Night Stay –1 night at each Dham with all meals
(Jain food is available at the hotels – On Request.)
- Local Sightseeing as mentioned in the itinerary
- VIP / Priority Darshans
- Palki/Pony at Yamunotri
- Kedarnath Helicopter Shuttle – Sersi/Phata/Guptkashi to Kedarnath & back
- All Taxes & Government Levies

EXCLUSIONS:

- GST 5% on package cost
- Return flights from Mumbai - Dehradun / Dehradun - Mumbai
- Cost of insurance
- Any upgrade of room category or hotel
- Cost of pre/post tour accommodation and transfers
- Any extra charges incurred due to any force majeure situation before the tour departure or during the tour, such as change in airline schedule, weather conditions, change in hotels

- Any personal expenses such as portorage, laundry, telephone, shopping, alcoholic beverages, extra mineral water or food that is not part of the groups set menu
- Any cost incurred due to illness, accidents, hospitalization or any personal emergency
- Cost of any optional activities or services
- Anything specifically not mentioned in the tour price inclusion
- Tips not included.



ACCOMODATION DETAILS

Destination	Hotel Name
Dehradun	Taj Mussoorie Foothills / Hyatt Centric / Hyatt Regency / Fairfield by Marriot / Or Similar
Kharsali	La Arkja Resort / Kalindi Hill top / Yamuna Kirit Cottages / Hotel Holy Yamuna/ Or Similar
Harshil	Namami Retreat / Nine apple resort / Himalayan Nature / Harshil Retreat / apple retreat / Or Similar
Sersi/Guptkashi/Phata	Turiya Heli Resort / Snow bell Resort / Kedar Paradise / Kedar Kantha / Ghughuti Resorts / Village retreat / Or Similar
Badrinath	Amritara by Awadh Hotel / Hotel Snow Crest / Yoga Premium Resort / Lord's Palace / Lord's centric / Lords Palace / Lord's centric / Or Similar

CHARDHAM ITINERARY

DAY 01: DEHRADUN

- Arrive at Dehradun Airport/Railway Station/Bus Stand by **2:00 PM or earlier**. Dehradun serves as the **main base** for the Chardham Yatra – both starting and ending point.
Kindly share your arrival details with us at the time of booking.
- Passengers will be **picked up from Dehradun Airport/Railway Station/Bus Stand** and comfortably **transferred to the hotel** for seamless check-in with personalized assistance.
- In the evening, attend the **mandatory Tour Briefing** conducted by the **Helicopter Operations Team**, where essential journey details and safety protocols will be shared.

Please note: During the tour briefing, our team will record the body weight of each pilgrim as required for helicopter operations.

Kindly ensure your mandatory attendance for a smooth journey.

Meals: Dinner

DAY 02: YAMUNOTRI DHAM

(Sahastradhara, Dehradun to Kharsali, Yamunotri)

**Following is the tentative itinerary; actual departure timings will be shared one night prior.*

- The buffet breakfast starts at 7 am in the morning. In case of early departure packed breakfast will be provided by the hotel.
- After checking out from the hotel at the designated time, our team will **escort you to the Sahastradhara Helipad** for your first helicopter departure. The slot will be between 6am – 9 am.
- Upon arrival at the **Sahastradhara Helipad**, our ground team will assist you in **settling into the waiting lounge**. A **pre-flight briefing** will be conducted before you are boarded onto the helicopter for your spiritual journey.
- Time taken from Sahastradhara Helipad to Kharsali Helipad is approximately **30 minutes**.
- **Above timings are indicative and subject to weather conditions*
- Upon landing at **Kharsali Helipad**, passengers will be **transferred to the hotel** for check-in. Later, they will be **escorted for Yamunotri Temple VIP / Priority darshan**, with the convenience of a palki/pony.
- **Time taken for Yamunotri Temple Darshan:** Approximately 05hrs 30mins (round-trip). Yamunotri trek is 06 km one-way by Palki/Pony.
- **Sightseeing at Kharsali:** Yamuna Mata Temple, and Shani Temple by walk only.

**Subject to weather conditions*

Please Note: Kharsali village is the least developed among the Chardham destinations; hence, hotel accommodation will be basic.

Meals: Breakfast, Lunch & Dinner

*(*Meals will be provided as per flight timings and VIP / Priority Darshan schedule)*



Yamunotri Dham



Gangotri Dham

DAY 03: GANGOTRI DHAM
(Kharsali, Yamunotri to Harshil, Gangotri)

**Following is the tentative itinerary; actual departure timings will be shared one night prior.*

- After breakfast, **check out from the hotel** and proceed to the **Kharsali Helipad**. Board your helicopter for a **35-40 minutes flight to Harshil / Jhala**, the gateway to Gangotri. The departure slot from Kharsali to Harshil will be between 6.30 am to 9.30 am.

**Above timings are indicative and subject to weather conditions*

- Upon landing, passengers will be **escorted to Harshil village** and assisted with a smooth **check-in at the hotel**.
- **Harshil** – The **second destination** of our journey, is renowned for its **lush apple orchards** and tranquil Himalayan charm. It is undoubtedly the **most scenic and picturesque stop** on the entire Chardham Yatra.
- After breakfast or lunch, depending on the crowd in the temple, passengers will be guided for **Priority darshan** at Gangotri Dham.
- **Time taken for Gangotri Temple Darshan:** Approximately 3hrs 30 mins (round-trip). The road distance from the hotel to Gangotri temple is approx. 25 km, which is roughly a 50-minute drive by a car.
- After Darshan, Sightseeing at Harshil

Meals: Breakfast, Lunch & Dinner

*(*Meals will be provided as per flight timings and VIP / Priority Darshan schedule)*

DAY 04: KEDARNATH DHAM

(Harshil, Gangotri to Sersi / Phata / Guptkashi to Kedarnath)

**Following is the tentative itinerary; actual departure timings will be shared one night prior.*

- After breakfast, check out from the hotel in Harsil and board your helicopter to arrive at the Sersi / Phata / Guptkashi Heli-base, en route to the divine Kedarnath dham.
- From the **Sersi / Phata / Guptkashi Heli-base**, passengers will be **ferried to Kedarnath** by Heli - shuttle services.
- Time taken from Harshil Helipad to Sersi / Phata / Guptkashi Helipad is approximately **30 minutes**.
- Upon arrival, passengers will walk to the temple, accompanied by our team. **Priority Darshan arrangements** will be facilitated by our handlers for a smooth and divine experience.
- **Time taken for Kedarnath Temple Darshan:** Approximately **02 hours**.
The shuttle services flight from **Sersi / Phata / Guptkashi Helipad to Kedarnath** is approx. 07 minutes (one way).
- After the **blessed Darshan at Kedarnath**, passengers will be **flown back to Sersi / Phata / Guptkashi**, from where they will be **transferred by road to their hotel** for rest and overnight stay.
- **Evening Sightseeing at Kedarnath**

**Subject to weather and road traffic conditions.*

Meals: Breakfast, Lunch & Dinner

*(*Meals will be provided as per flight timings and VIP / Priority Darshan schedule)*

DAY 05: BADRINATH DHAM

(Sersi / Phata / Guptkashi, Kedarnath to Badrinath)

**Following is the tentative itinerary; actual departure timings will be shared one night prior.*

- Early morning breakfast at Hotel in Kedarnath and check-out. Passengers will be **transferred by road to the Sersi / Phata / Guptkashi Helipad**, from where they will **board a helicopter to Badrinath**, the final Dham of the Yatra.
- Time taken from Sersi / Phata / Guptkashi Helipad to Badrinath helipad is approximately **30 minutes**.
- Upon landing at **Badrinath**, passengers will be **escorted to their hotel** for check-in and breakfast. Afterwards, they will be **guided by our handlers for Priority Darshan** at the sacred **Badrinath Temple**.
- **Time taken for Badrinath Temple Darshan:** Approx. **01-1.5 Hrs.**
- After Darshan, passengers will be served a **delicious lunch** at the hotel restaurant.
- **Post Lunch, Sightseeing at Badrinath:** Mana Village – famously known as the **‘First Village of India’** due to its close proximity to the **China border** – a scenic and culturally rich experience, accessible by car.

Meals: Breakfast, Lunch & Dinner

*(*Meals will be provided as per flight timings and VIP / Priority Darshan schedule)*

DAY 06: RETURN TO DEHRADUN

(Badrinath to Sahastradhara Helipad, Dehradun)

**Following is the tentative itinerary; actual departure timings will be shared one night prior.*

- Passengers will **check out from their hotel in Badrinath** and be **transferred to the Badrinath Helipad**, as per slot provided.
- Time taken from Badrinath to Sahastradhara Helipad, Dehradun helipad is approximately **55 minutes**.
- From there, they will **board a helicopter back to Sahastradhara Helipad in Dehradun**, concluding their spiritual journey.
- From Sahastradhara Helipad, passengers will be dropped to hotel for their luggage collection. Further, the passengers will be provided drop off to Jolly Grant Airport (Dehradun).

Meals: Breakfast

Chardham yatra Concludes.

Tour Pricing

Accepting bookings for **Summer 2025** (1st May 2025 – 12th June 2025)

Tours for Sept – Oct 2025 (Dates to be Announced Soon)

Per Person on Double/Twin Sharing Basis: Starting from ₹2,35,000 + 5% GST

Embark on this spiritual journey and create unforgettable memories together.



ADD-ON SERVICES:

1. MAHA-ABHISHEK PUJA AT BADRINATH JI: On actual Cost basis

The full payment must be made at the time of booking. This ensures that all required arrangements can be made and the Puja is pre-booked for each passenger.

Please be aware that the Maha Abhishek Puja is not included in our package.

2. RUDRA-ABHISHEK PUJA AT KEDARNATH JI: On actual Cost basis

The full payment must be made at the time of booking. This ensures that all required arrangements can be made and the Puja is pre-booked for each passenger.

Please note that the Rudra Abhishek Puja is **subject to room availability** at Kedarnath Top, as an overnight stay might be required. In such cases, additional hotel accommodation charges will apply.

**Kindly be informed that the Rudra Abhishek Puja is not part of our package.*

**Disclaimer: Accommodation at Kedarnath Top is in the budget category, and there may be occasional concerns regarding hotel services and room conditions. Additionally, during September and October, nighttime temperatures and oxygen levels may drop significantly. Passengers are advised to take these factors into consideration before confirming their stay. We will not be held responsible for any incidents involving guests staying overnight at Kedarnath Top.*

Terms and Conditions:

- **FIXED FLIGHT TIMINGS:** This is a daily fixed departure timing helicopter tour. Therefore, passengers must ensure that they report as per the scheduled departure timings. Failure to do so will result in being marked as a no show. However, Helicopter operator reserves the right to change/postpone the timings of flying one day prior, subject to weather/force majeure reasons.
- **HELICOPTER WEIGHT LIMITATION:** The maximum weight capacity of the helicopter is **450 kg** (excluding baggage weight). Passengers are taken on board depending on the load and temperature conditions, and the pilot's call will be final. Hence, passengers are required to provide us with their exact body weights at the time of booking.
- **OVERWEIGHT CHARGES:** Overweight charges are applicable @ INR 3000/kg. This will be chargeable to passengers as an extra cost for weighing above 75 kg.

PENALTY ON SUBMISSION OF INCORRECT WEIGHT

- Passengers are requested to provide accurate weight at the time of booking. In the event of any weight discrepancy at the time of travel the affected passenger will be deboarded and the operator will cancel the travel without any refund.

Please Note: While submitting the body weights, please keep in view that you submit your final weight on the higher side, after adding extra weight of your clothes and shoes.

- **BAGGAGE ALLOWANCE:**
- Only one baggage weighing a maximum of 5 kgs is allowed per passenger. It is not permitted to carry suitcases or big travel bags in the helicopter. Passengers are expected to carry duffle bags only.

- The 5 kg baggage limit must be maintained throughout the journey, and luggage weight would be checked at all the Dhams. In case of excess baggage weight, a penalty will be applied by the helicopter operator, and baggage will only be loaded subject to the aircraft's weight carrying capacity.
- If the baggage exceeds permissible limits, it will be offloaded and not transported further.
- Passengers are advised to pack thoughtfully to avoid any inconvenience.
- Passengers can keep the extra luggage in the hotel cloak room at Dehradun.
- In view of our helicopters' weight-carrying capacity, Helicopter operator reserves the right to shuffle passengers between helicopters to manage the right weight for safe flying in the hills. Therefore, passengers travelling together may not be accommodated in the same helicopter flight.
- **SEATING CAPACITY:** The seating capacity of helicopter is 06 passengers.
- **ARRIVAL DATE:** Our Tours are booked flying-date-wise (Day 2 of the tour). Passengers must report to Dehradun one day prior to the flying date.
- VIP / Priority Darshans are subject to the orders issued by the temple authorities and State government.
- **Kedarnath shuttle service:** Passengers will be ferried to Kedarnath ji in a shuttle services flight. And it is likely that passengers travelling together may not be accommodated on the same flight.
- Any sudden increase in taxes/levy by the State Government or the temple authorities, will be borne by the passengers.
- If online yatra registration will be compulsory, then passengers will have to do the same on their own prior to travel.
- Comfortable clothing such as tracksuits or Kurtas are advised on the tour. As for shoes, one should carry sports or trekking shoes.

- **For Infants:** Infants below 2 years (Max 12 kg weight) are accommodated free of charge. Above 2 years, will be considered as full ticket. For verification of age the child, ID proof/birth certificate of the child will be checked.
In case an infant is on board, the weight of the infant will reduce the total permissible weight of that respective group.
- Any donations, tips, pitthu, extra porter charges shall be borne by the passengers.
- Airport transfer shall be provided on the arrival day or maximum one day prior to the arrival day, and the same would be applicable for the drop at Dehradun Airport. Only 01 transfer would be provided for each side. It could be Airport to hotel or Hotel to Hotel transfer.
- Network connectivity at Harsil & Badrinath is very poor. BSNL, Airtel & Jio are the main telecom services, that work in these regions mostly.
- **TEMPLE TIMINGS:** The opening and closing timings of the Dhams often change every season. Our team carefully plans and schedules the flights for each group in accordance with the temple timings to ensure a smooth and well-coordinated pilgrimage experience.
- Taking pictures inside the temple is prohibited.
- All temples in Chardham sector are located at a high altitude, therefore passengers are advised to carry medication after consulting their doctor before travelling. Also, they are advised to carry warm clothing with them, because during evenings & nights, the temperature can drop drastically.
- For the senior citizens and people with medical issues are hereby advised to kindly consult a doctor and get medical check-up done before commencing the yatra. Medical check-up is mainly required if a passenger has any medical ailment.
- Passengers might be ferried in different shuttle services flights, in view of the maximum weight carrying capacity of the aircraft at a high-altitude destination such as Kedarnath.

- **BAD WEATHER & FORCE MAJEURE DISCLAIMER:** Flying in hills are prone to bad weather, and many Force Majeure factors like delayed Air Traffic Clearances/Permissions, VVIP movements, valley flying by Indian Air Force (NOTAM), sudden occurrence of technical snag in aircraft, illness of flying crew or late reporting of the passengers at the helipads, among others. Therefore, passengers must be prepared to face any eventuality and inconvenience in case of such scenarios.
- AADHAR Card copies are to be shared by all Indian passengers, & passports in case of foreign nationals.
- **HOTELS:**
 - In case the advised hotel at any place is not available the passengers will be accommodated in a similar category hotel.
 - Rooms are booked on a double/twin sharing basis only.
 - For a separate single occupancy room, it will be chargeable extra.
 - Hotels at all the Dham's are non-star category. However, we have carefully selected the most comfortable properties for our tours.
- We advise our passengers to keep one additional day at hand at the end of the tour, over & above the 5N/6D period, to avoid missing their return flights in case they get stuck at any of the destinations due to bad weather or force majeure reasons.
- **ADD-ON SERVICES:** Additional services which are not mentioned in our inclusions will be charged extra, and the same must be confirmed to us at the time of booking.
- **MEDICAL EMERGENCIES:** We will not be liable for any medical emergency on the ground to the passengers. Therefore, in your own interest, passengers are hereby advised to kindly consult a doctor and get a medical check-up done before commencing the yatra.

A medical check-up is mainly required if a passenger has any medical ailment or condition. If Medical evacuation by Helicopter is needed, it will be chargeable.

- All passengers are required to be physically fit to fly and do the yatra.

- **CARRIAGE BY AIR ACT, 1972**

The carriage is subject to Helicopter operator regulations relating to the conditions of Non-International Carriage (Passenger and Baggage) framed in accordance with The Carriage by Air Act, 1972 and Notification regarding the application of the carriage which is non-international. The liability of the company for damage sustained in the event of the death or wounding of a passenger or any other bodily injury suffered by the passenger or by his registered baggage during the course of carriage by air will be governed by the provisions of sections 4,5,6 and the rules contained in the Second Schedule of Carriage by Air Act 1972 with certain exceptions, adaptations, modifications, etc as notified in the Govt. of India, Ministry of Civil Aviation Notification and as amended from time to time.

- Helicopter Operator reserves the right to cancel passengers, who are unruly, abusive, intoxicated, sick, mentally unfit or anyone else whom we deem to be unsafe to fly. No refund shall be done to such passenger(s).
- **RESCHEDULING OF BOOKING:** Rescheduling your booking to any future or prior travel date will be done subject to availability and on extra payment of 10% of the total tour cost. This will be permitted only if informed at least 28 days before the arrival date.

In case rescheduling is requested less than 28 days prior to the travel date, then the booking would be treated as cancelled, & a fresh booking will be given subject to availability, after the levy of applicable cancellation charges.

- **PAYMENT TERMS:**

- We accept payments via bank transfers, cheques, cash, and UPI.
- The booking is to be done in advance with a deposit of 50% of the total amount. Balance payment will be taken 28 days prior to the date of arrival.
- Passengers will not be permitted to board or commence the tour unless full & and final payment of the tour has been made.

- **CANCELLATIONS POLICY:**

If passengers cancel their booking, the following cancellation charges will be applicable -

- More than 90 days prior to travel date: 25% of total tour cost
- Between 60 to 90 days prior to travel date: 40% of total tour cost
- 30 - 60 days prior to travel date: 50% of total tour cost
- 30 Days or less prior to travel date: No Refund
- No show: No Refund
- After commencement of the tour: No Refund

- **FORCE MAJEURE & BAD WEATHER REFUNDS:**

Basis of Refund:

Tour Cost: The refundable amount of each uncovered Dham will be as mentioned below:

- Kharsali/Yamunotri: 20% tour cost minus INR 30,000 towards Flight preparation & service charges, and utilized services (if any).
- Harshil/Gangotri: 20% tour cost minus INR 30,000 towards Flight preparation & service charges, and utilized services (if any).
- Sersi/ Guptkashi/ Phata /Kedarnath: 30% tour cost minus INR 30,000 towards Flight preparation & service charges, and utilized services (if any).
- Badrinath: 30% tour cost minus INR 30,000 towards Flight preparation & service charges, and utilized services (if any).

- Full tour cancellation: Full refund minus INR 30,000 towards flight preparation & service charges, hotel retention charges and utilized services (if any).
- **Additional Services:** The cost of additional services provided at any Dham during the tour will be deducted over and above the refundable Tour Cost.
- Refund against an unutilized service will not be done.
- **COVID-19 Lockdowns, or any National/State Emergency:** In case passengers test COVID positive before the travel, or the Yatra gets called-off by the government, or any National or State emergency is imposed, there will be no refunds applicable.
- **BAD WEATHER & FORCE MAJEURE POLICIES:**
- Where bad weather, technical snags, or any force majeure reason beyond our control results in the cancellation of the flight or delay, we will not be liable in any way for the cancelled or delayed flight. However, refund will be given to clients as per our refunds policy. Any kind of inconvenience caused because of cancellation of flights is beyond the control of the operator. No compensation or reimbursement for accommodation, transportation, meals, or any other extra travel expenses done by the passengers shall be offered in the event of cancellation of a flight.
- In case tour departure does not take place from Dehradun on Day One due to above reasons, tour will be considered as cancelled and full refund as per our policies will be made.
- However, in case the passengers would like to consider taking the tour on the next available date, a fresh booking can be made for the same. Our team will propose the available options to the passengers.
- The balance/unutilized amount against previous booking can be adjusted against the fresh booking. And any extra costs that would be accruing, will have to be borne by the passengers.
- In case the tour departs from Dehradun as per schedule but gets disrupted, while the tour is ongoing, our team will propose the possible revised itinerary within the scheduled package days, but without any extension of days.

- Any extension, proposed by the passengers, in the package will only be considered at an extra cost and subject to operational viability.
- In case for 05 straight days flying does not take place, full refund as per our policies will be made to the passengers.
- New Chardham passenger(s) scheduled for departure from Dehradun on any respective travel date shall be our top priority, over the back-log passenger(s) of previous days(s).
- In case of passenger get stuck at Kedarnath top due to bad weather or Force Majeure, the accommodation charges at Kedarnath will be borne by the passenger directly.
- **KEDARNATH BAD WEATHER DISCLAIMER:**
- Bad weather stops helicopter flying at Kedarnath which is highly common in the Kedar valley. Due to this, passengers are at risk of getting stranded and spending the night at Kedarnath top.
- In such conditions our team will try to arrange rooms at the guests houses available at Kedarnath top. These rooms will be booked on ad-hoc basis subject to availability, and the accommodation charges will be borne directly by the guests. Additionally, no refund for the pre-booked accommodation at Sersi/ Guptkashi/ Phata will be applicable under such circumstances.
- Also, please note that the guest houses at Kedarnath are very basic, often lacking standard amenities like hot water, clean beds, and proper hygiene. And unfortunately, due to extremely high demand of rooms, the cost of accommodation at Kedarnath tends to be unfairly high compared to the quality of services offered. Guests are advised to be prepared for such contingencies.
- Additional night halt charges will be payable by the passengers to hotels on a direct payment basis if they get stuck for additional nights due to bad weather/force majeure reasons over and above the 5N/6D period.
-

- If passengers require extra helicopter flying at the end of their tour, the same will be chargeable.
- While the tour is ongoing, if any group demands to cancel their tour mid-way, the arrangement of transportation will be done by us, however, the cost for the same will be borne by the passengers on a direct payment basis.
- Any increase in government levies or taxes, after the confirmation of booking, will be extra chargeable to the passengers. Payment against the same will have to be done before the commencement of the tour.
- DISPUTES
Disputes as to the legality, interpretation, application or performance of service or any of its terms and conditions shall be governed by the laws of Delhi Jurisdiction.
- **Details required from the passengers for booking:**
 1. Name / Date of Birth / Age / Gender
 2. Contact details / address
 3. Govt Identity proof (Aadhar Card / Passport copy / etc.)
 4. Accurate body weight

Bookings will be taken, considering there is acceptance of the above-mentioned terms & conditions by the guest.

Book Your Seat TODAY!

Phone: +91 8657058708/ +91 8806859620

Email: sales@tatvaexpeditions.com

Visit us: www.soil2soulexpeditions.com